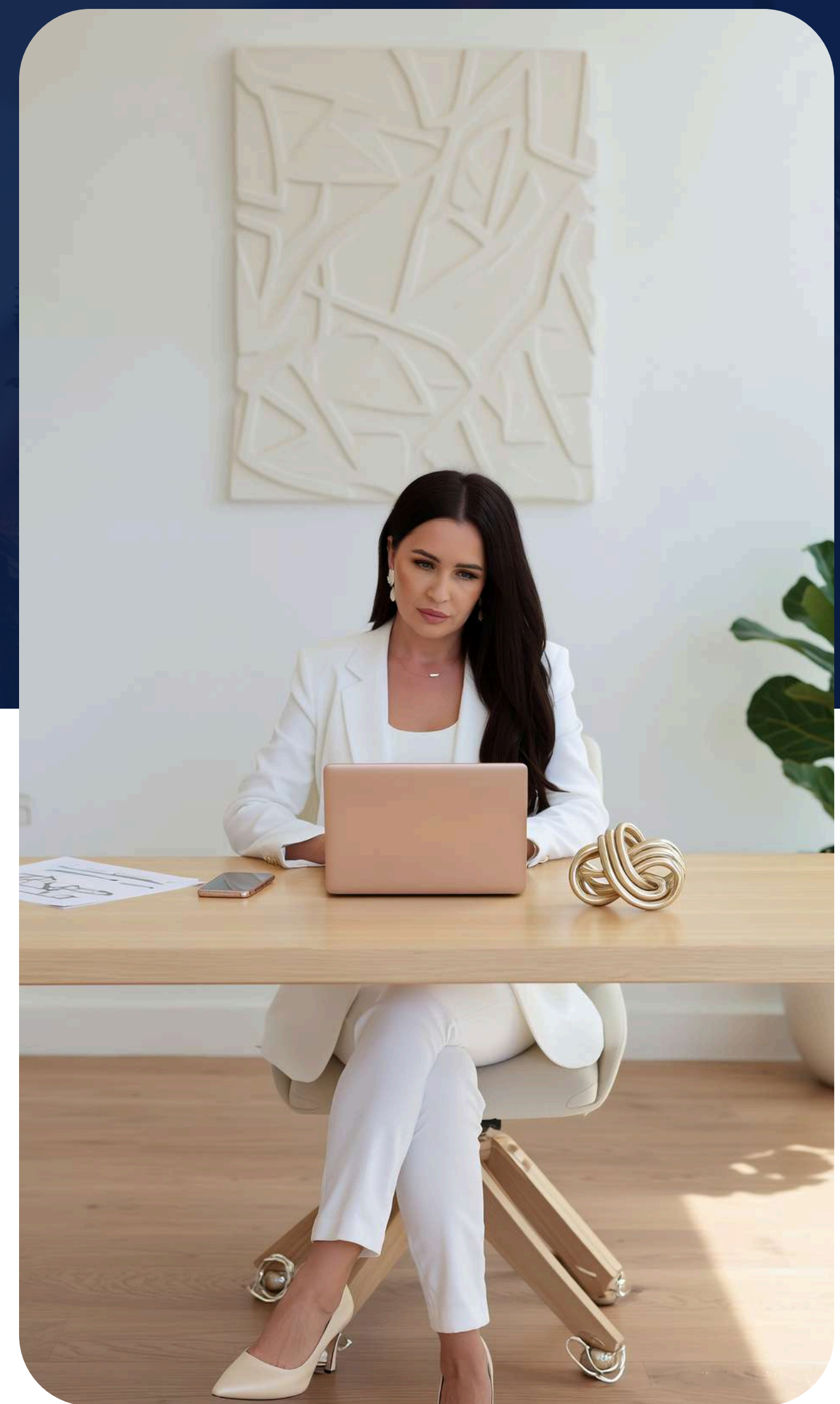
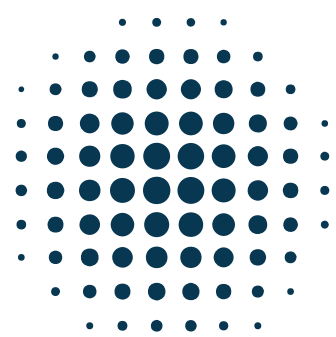


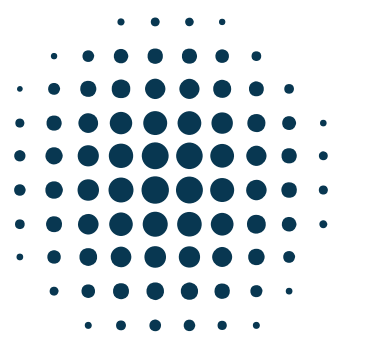
# Oxfordian College

## Accredited Training Partner Commercial & Financial Plan



# Introduction

Oxfordian College collaborates with training providers globally to deliver recognised professional and vocational programmes under a structured academic governance framework. This partnership model allows training organisations to operate their own training business while benefiting from Oxfordian College's academic oversight, certification administration and compliance infrastructure. Training partners are responsible for recruiting learners and delivering training programmes, while Oxfordian College manages governance, certification administration and compliance oversight to ensure programme standards are maintained.



## Partnership Structure

The Oxfordian partnership model is designed to allow training organisations to operate independently while delivering programmes under Oxfordian's academic framework.

### Training Partner Responsibilities:

- Learner recruitment and marketing
- Programme delivery
- Development of teaching materials
- Tutor engagement and learner support
- Course pricing and programme management



### Oxfordian College Responsibilities:

- Academic governance oversight
- Learner registration administration
- Certification processing
- Compliance monitoring
- Internal quality assurance oversight



# Accredited Partner Onboarding

**One-time onboarding investment: £3,000**

**The onboarding process includes:**

- Partner approval and due diligence
- Tutor and assessor verification
- Programme mapping and approval
- Academic governance setup
- Quality assurance onboarding

This process ensures that partners can operate under the Oxfordian academic framework while maintaining appropriate programme standards.



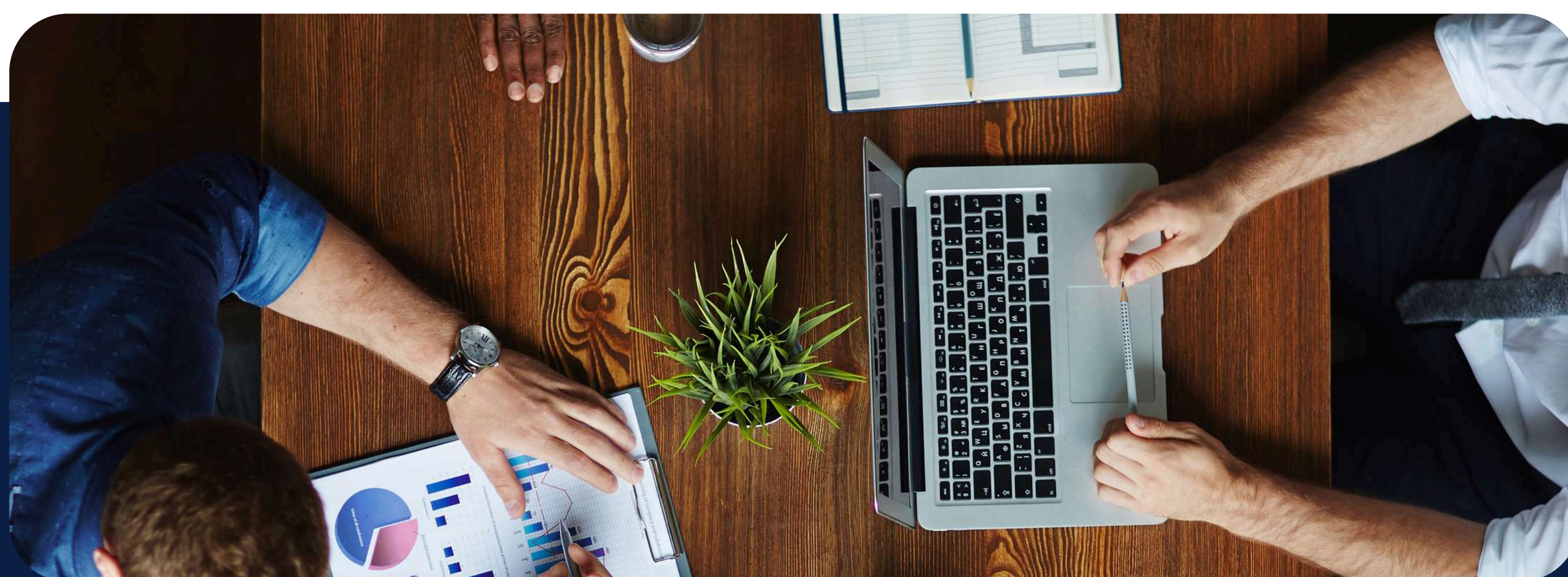
## Monthly Quality Assurance Support

**Monthly support fee: £300 per month**

**This covers:**

- Internal quality assurance oversight
- Assessment sampling
- Programme monitoring
- Tutor approval and verification
- Compliance monitoring
- Academic advisory support

This process ensures that partners can operate under the Oxfordian academic framework while maintaining appropriate programme standards.



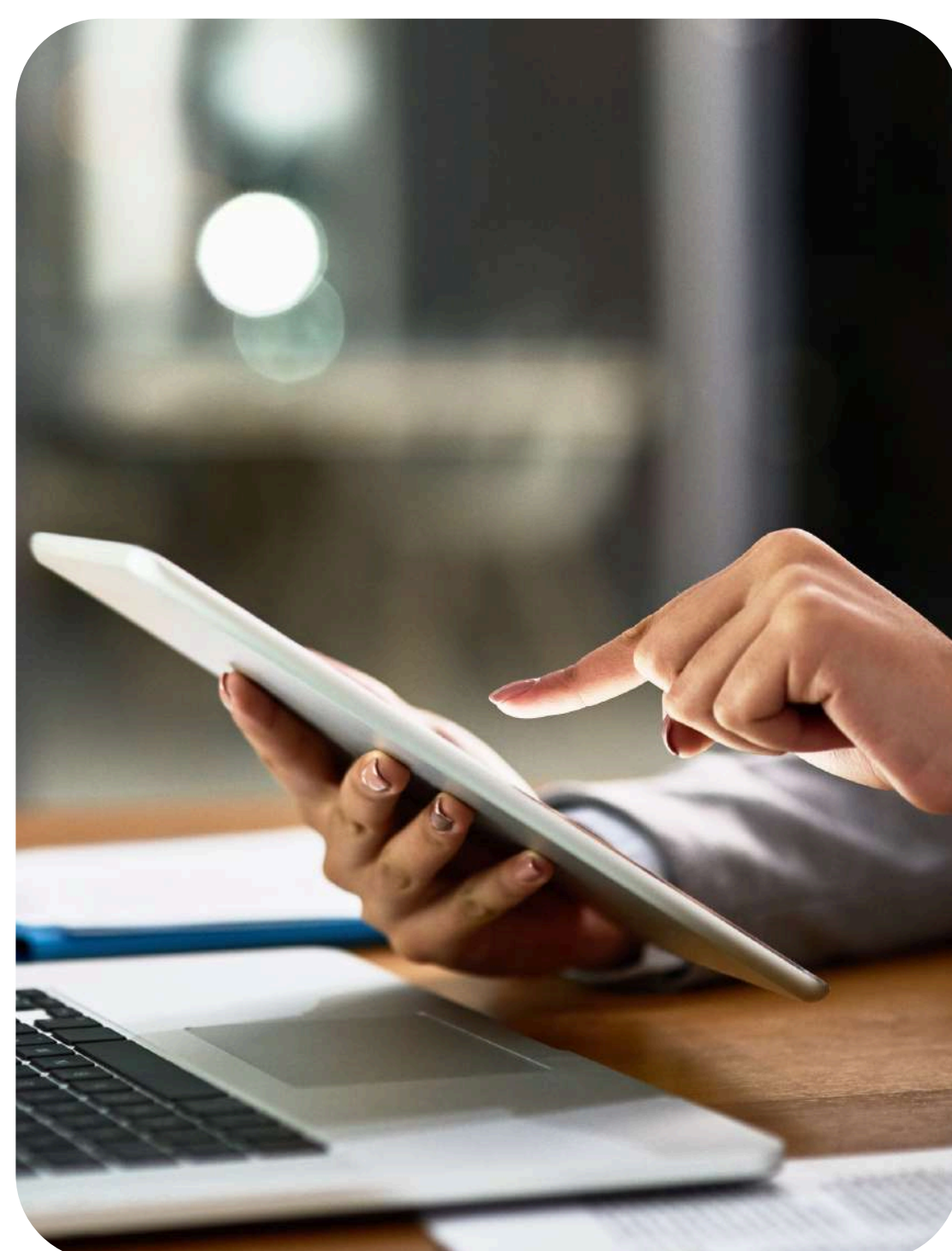
# Certification & Compliance Fee

**Oxfordian College charges a Certification & Compliance Fee of £200 per learner registered through the Oxfordian academic framework.**

This fee is payable at the point of learner registration and covers:

- Learner registration administration
- Certification processing
- Compliance monitoring
- Programme governance oversight
- Academic administration required to support programme delivery

The Certification & Compliance Fee is payable each time a learner is enrolled and registered through Oxfordian College.



## Learner Registration Timing

Partners are expected to register learners with Oxfordian College promptly after enrolment.

Learners should normally be registered within 10 working days of programme commencement.

Learners should not begin programmes delivered under the Oxfordian academic framework unless they have been properly registered.

# Awarding Organisation Fees

Where programmes require certification through an awarding organisation, the relevant awarding body registration and certification fees are the responsibility of the training partner.

These fees are determined by the awarding organisation and vary depending on the qualification delivered.

Oxfordian College may provide guidance and administrative support to partners in liaising with awarding organisations where required.



# Assessment Requirements

Partners must ensure that tutors and assessors delivering programmes hold appropriate professional qualifications.

Where programmes require formal assessment, assessors should hold a recognised assessor qualification.

If a partner organisation delivers training but does not employ a qualified assessor, Oxfordian College may provide assessment countersigning or verification support through enhanced academic support arrangements.

# Enhanced Academic Support Option

Where Oxfordian College is required to provide ongoing assessment countersigning or enhanced academic oversight, additional support arrangements may apply.

Enhanced academic support option: £500 per month.

This covers the additional academic time required to review and verify learner assessments.



# Branding and Representation

Training partners operate under their own organisational brand and identity. Where relevant, partners should indicate that programmes are delivered through Oxfordian College using wording such as:

**“Programme delivered in collaboration with Oxfordian College.”**

or

**“Certification awarded through Oxfordian College.”**

Partners must not present themselves as the awarding body or certification authority.



## Example Revenue Scenario

Example programme fee charged by training provider: £2,200 per learner.

Number of learners: 20.

Total revenue generated by training provider: £44,000.

Oxfordian Certification & Compliance Fee: £200 × 20 learners = £4,000.

Revenue retained by training provider before awarding body fees: £40,000.

Awarding body registration and certification fees are payable directly by the partner.



# Scaling a Training Business

Training partners maintain full control over course pricing and recruitment strategy.

## **Example annual scenario:**

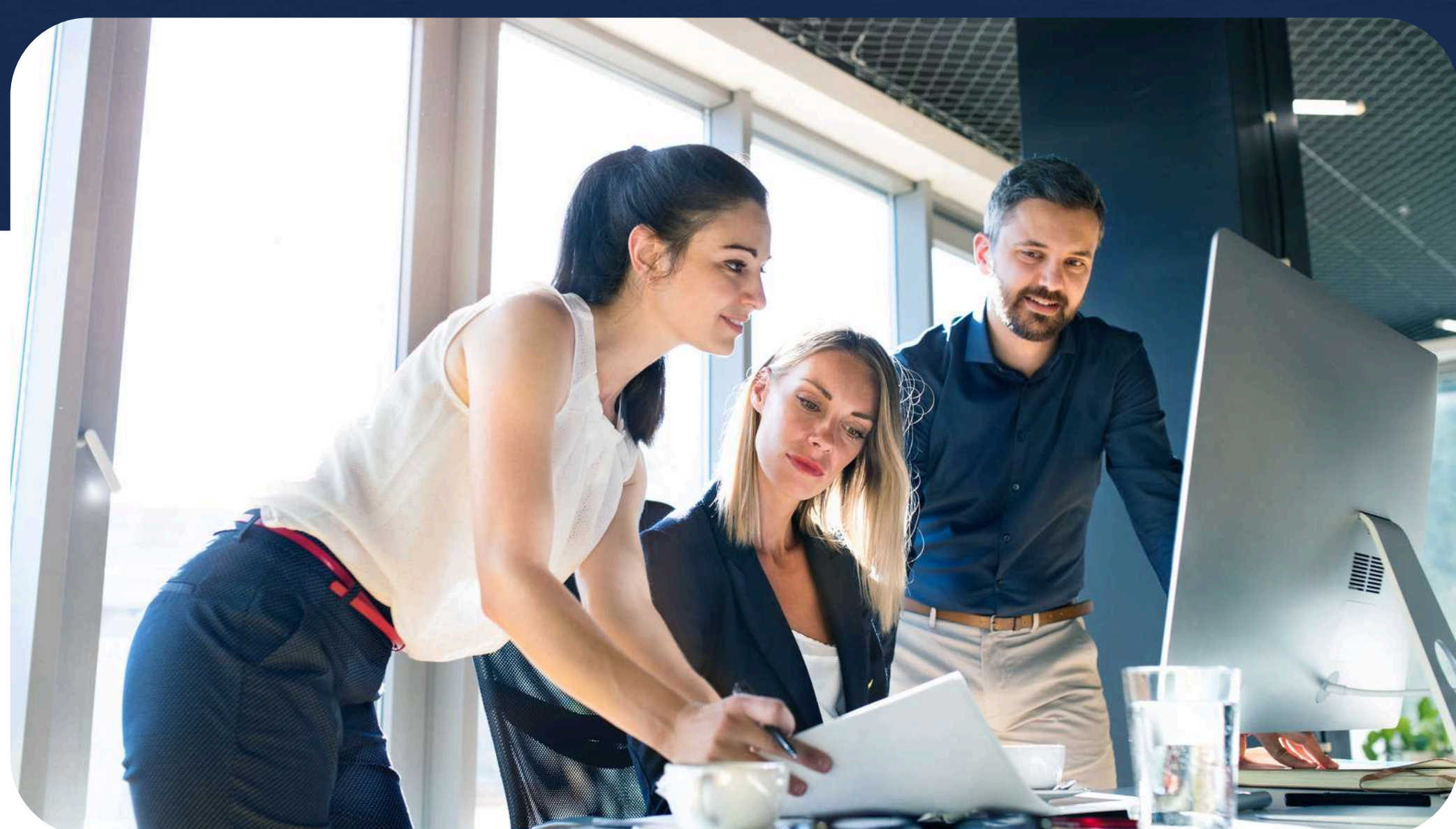
20 learners per cohort Course fee £2,200 Revenue per cohort:  
£44,000

## **Running 3 cohorts per year:**

Total annual revenue: £132,000

## **Oxfordian Certification & Compliance Fees:**

£200 × 60 learners = £12,000 Revenue retained by training provider before  
awarding body fees: £120,000



## Partnership Benefits

The Oxfordian partnership model allows training providers to:

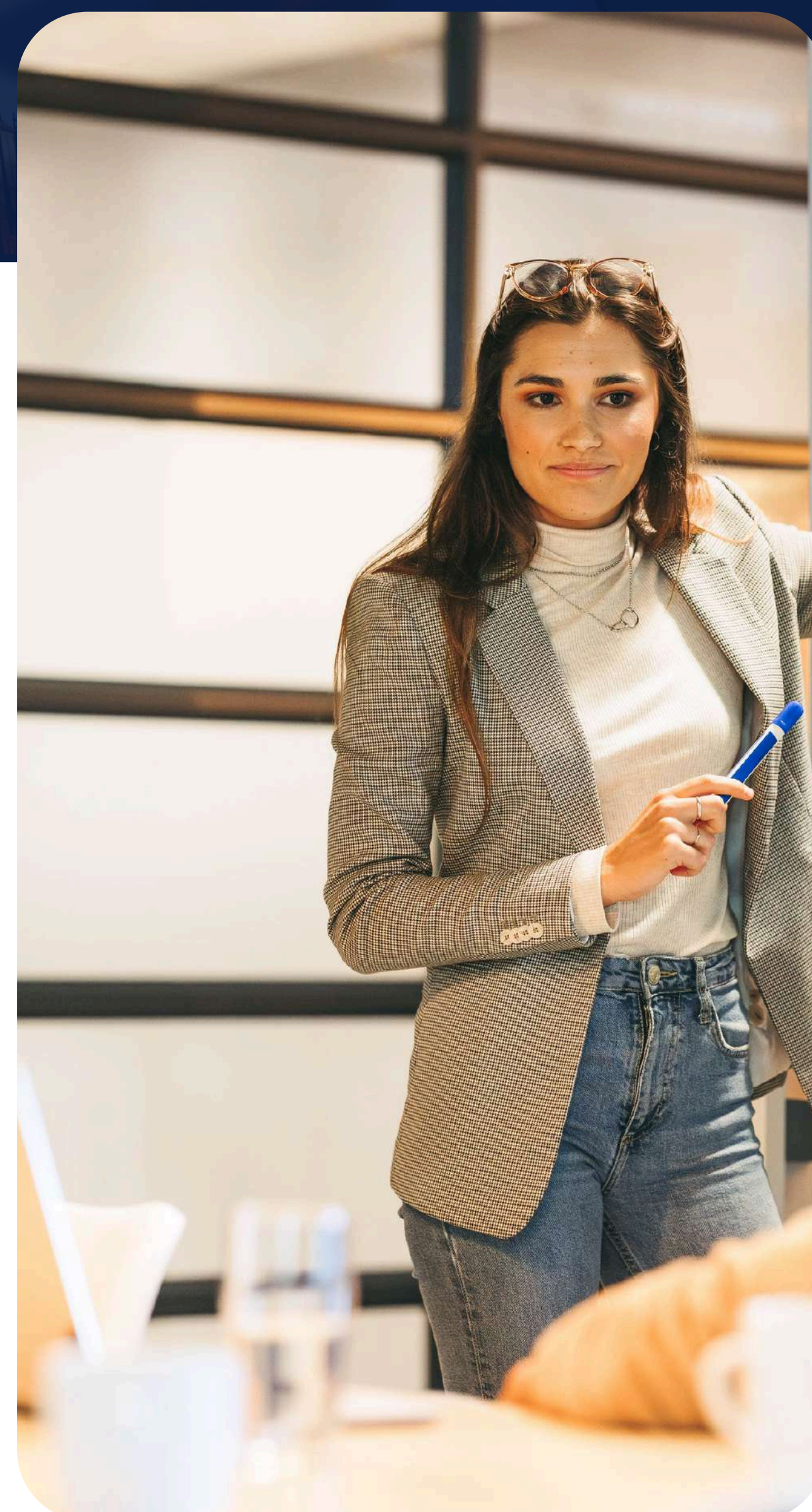
- Launch accredited programmes quickly
- Retain full control of their training business
- Scale learner recruitment
- Benefit from academic governance and certification infrastructure
- Deliver recognised qualifications without becoming an awarding body centre



# Next Steps

Organisations interested in becoming an Oxfordian Accredited Training Partner can schedule a consultation meeting.

Following consultation and approval, partners may proceed with onboarding and begin delivering programmes through the Oxfordian academic framework.



## Accreditations



+44 1603 510477



[www.oxfordiancollege.com](http://www.oxfordiancollege.com)